



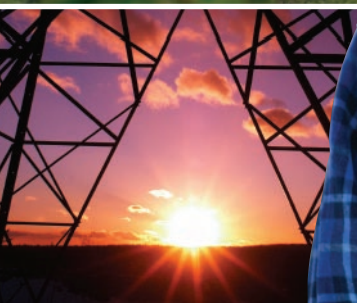
# the remote answer

*keeping business in touch with its people  
and resources...anytime, anywhere*

## Rising operating costs, regulatory compliance, increased demand for qualified personnel...

**RomTrax is a cost-effective tracking and monitoring system developed to help companies meet the demand of today's workplace.**

- Employee safety for working alone and in hazardous areas
- Vehicle and asset tracking, monitoring and security
- Driver logs, fuel tax credits and two-way global messaging
- Easily customized for specific applications





**Proven technologies designed and packaged for easy integration, quick installation and low maintenance make RomTrax the most advanced, cost-effective monitoring/tracking system available.**

## Work Alone and Hazardous Locations

- Active graphical user interface (GUI) with panic button
- Daily activity and status reports for management review
- GEOfencing for vehicle security and unauthorized usage

## Navigation and Geomatics

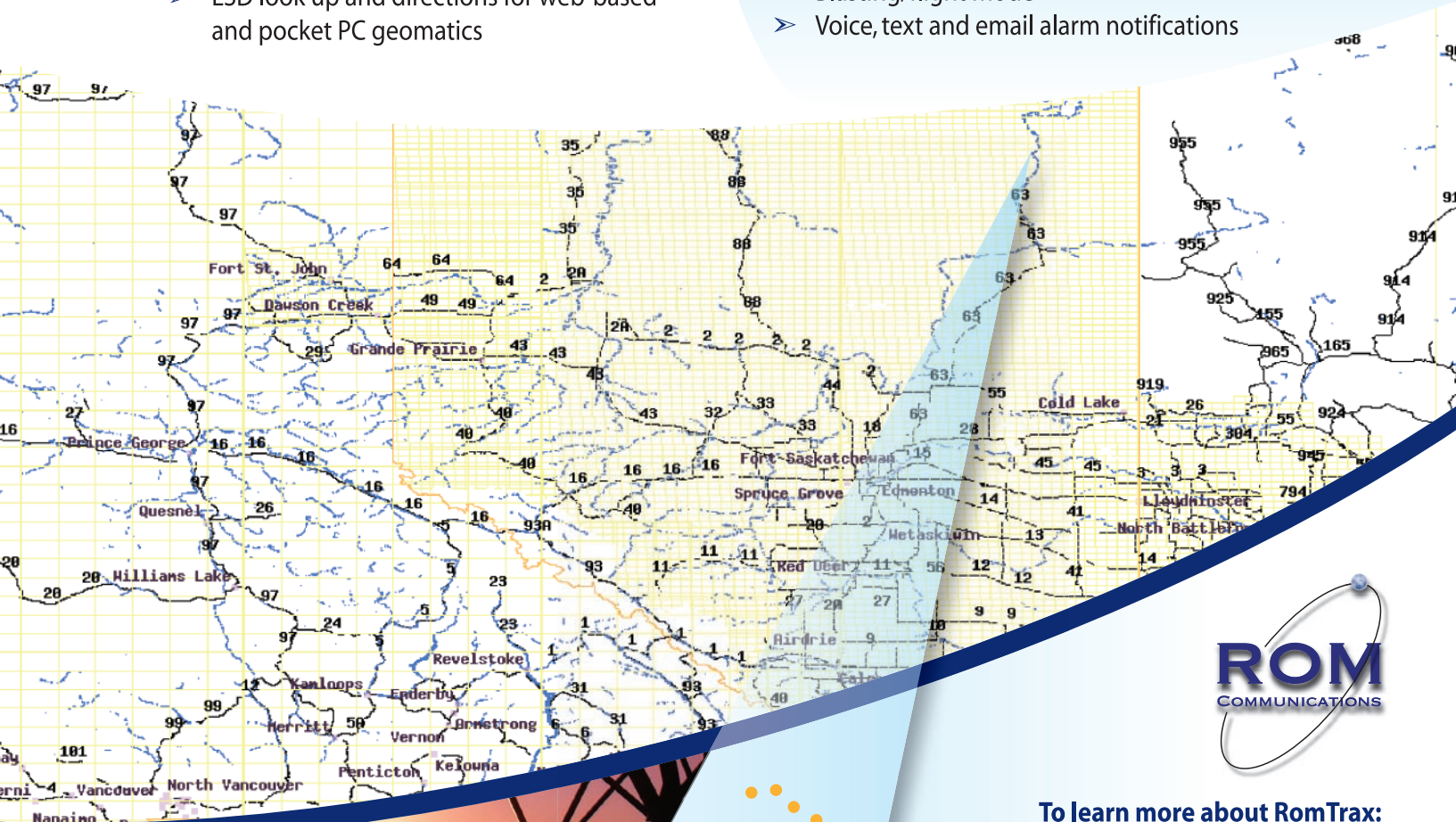
- Web-based geomatics with off road detail for Alberta, British Columbia and Saskatchewan
- LSD look up and directions for web-based and pocket PC geomatics

## Vehicle and Asset Management

- GPS tracking and on demand polling
- Virtual hour meter for usage and maintenance
- Temperature, pressure and level monitoring

## FEATURES & BENEFITS

- Satellite and cellular options for global coverage
- Two-way messaging for the most remote areas
- Electronic driver logs and vehicle inspections
- Fuel tax rebate support
- Blasting/flight mode
- Voice, text and email alarm notifications



**IRIDIUM**  
ONE SYSTEM, GLOBALLY.

To learn more about RomTrax:  
**877.860.3762**  
[info@romcomm.com](mailto:info@romcomm.com)  
[www.romcomm.com](http://www.romcomm.com)